

Better Rural Innovation: Linking Actors, Instruments and Policies through Networks (LIAISON)

Monitoring, evaluation and learning (MEL) in multi-actor networks

Presenter:

Anna Maria Augustyn

Collaborators:

Dana Cristina Repede, Helen Aldis, Maddalena Bettoni, Cristelle Couzy, Janusz Dąbrowski, Jose Maria Diaz Puentes, Elena Favilli, Robert Home, Martin Javornicky, So Young Lee, Aine Macken Walsh, Jekaterina Markow, Gabriela Molina, Christine Moulin, Susanne von Münchhausen, Dona Pickard, Kate Pressland, Sylvain Quiédeville, Maria Rivera Mendez & Svetla Stoeva

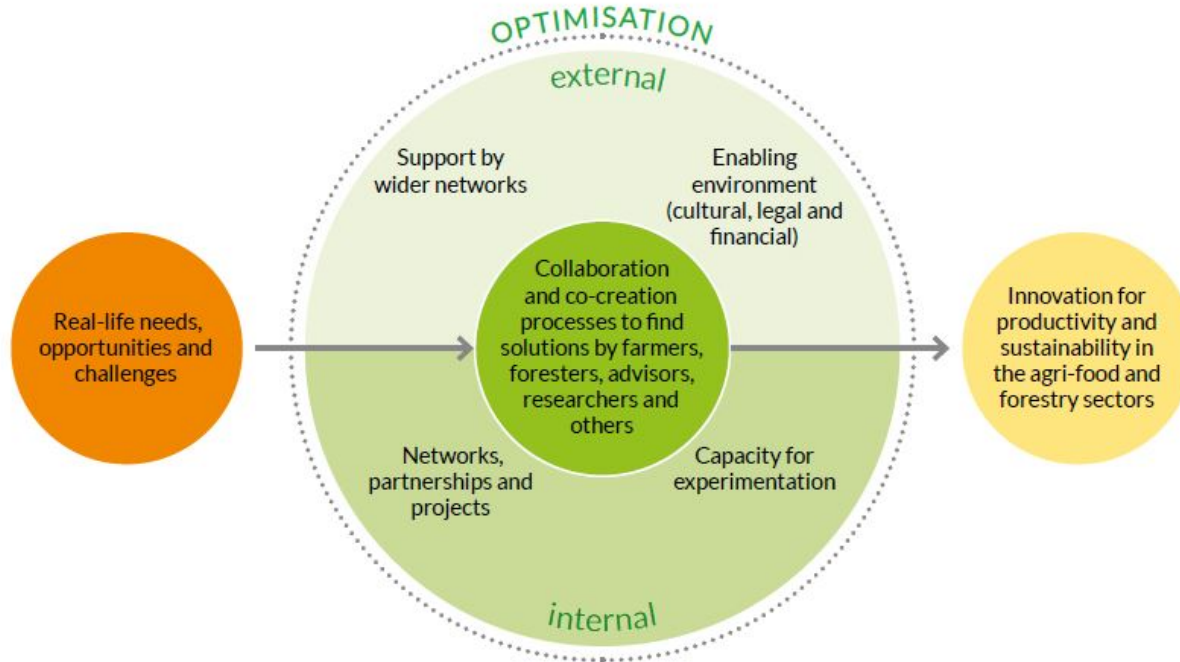


About LIAISON project



- EU-funded R&I project that aims to help unlock the potential of “working in partnership for innovation” in agriculture, forestry and rural business
- Mix of academics and practitioners from 17 organisations in 15 countries
- May 2018-October 2021
- Evidence from the EU EIP-AGRI, Horizon 2020 and other multi-actor projects
- Mixed-method and participatory approaches

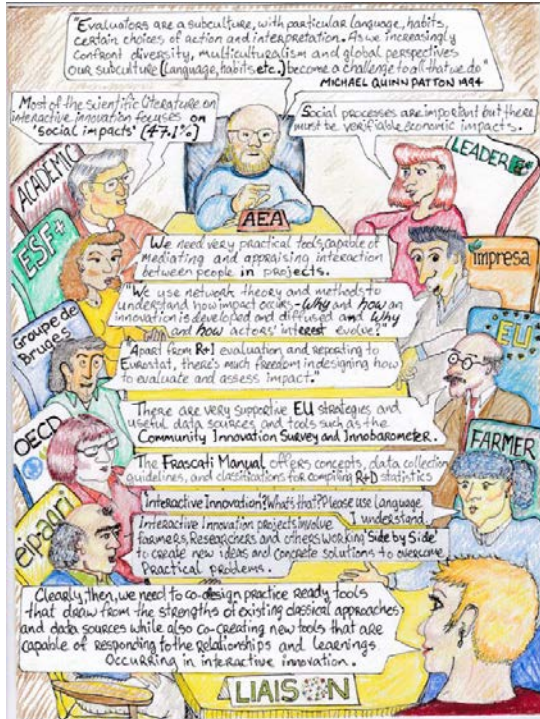
Optimisation of agricultural innovation



Evaluation in LIAISON

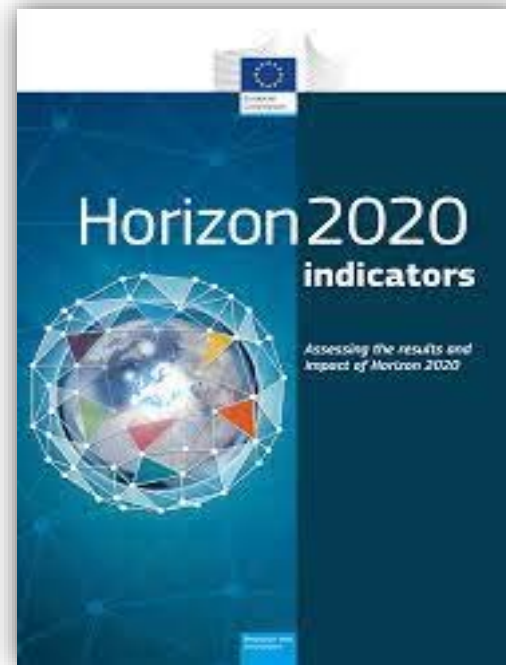
- Important for optimisation of the innovation
- Highlight challenges of evaluation in the interactive innovation context
- Validate classical evaluation methods
- Co-design alternative / complementary approaches to the EU evaluation
- Build capacities of the evaluation intermediaries and project beneficiaries
- Explore MEL potential for agricultural innovation

Evaluation of interactive innovation



- Diverse evaluation stakeholders=diverse needs
- Interactivity of innovation is rarely evaluated and difficult to measure
- Popular indices measuring agricultural innovation pay little attention to interactivity (e.g. EU, OECD, ASTI)
- Evaluation of interactive innovation or evaluation of interactive innovation projects?
- Challenges for the Intervention Logic / Logframe

The EU evaluation system



Our approach



8 multi-actor case studies:

Diverse funding schemes

Cascading coaching system:

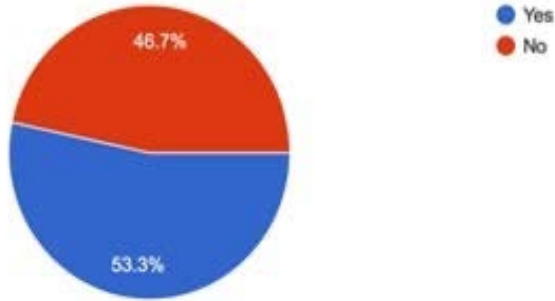
Building evaluation capacity of the LIAISON team and together with them the actors of each project

Leveraging capacities:

Limited funding, time and evaluation experience within the team -> simplify the approach

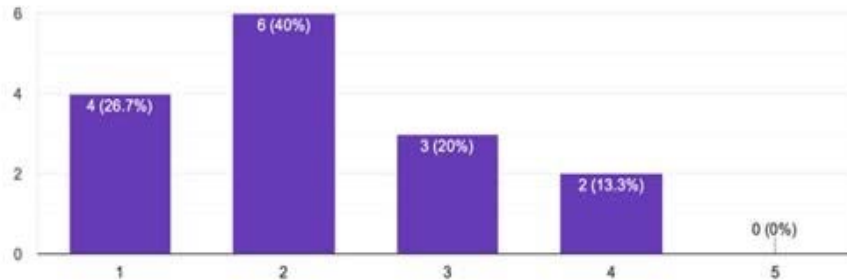
Did you apply quantitative evaluation tools in the past?

15 responses



How familiar are you with the EU evaluation approaches?

15 responses



1- not familiar at all, 5 - highly familiar

Evaluation capacity in the LIAISON team

Case studies



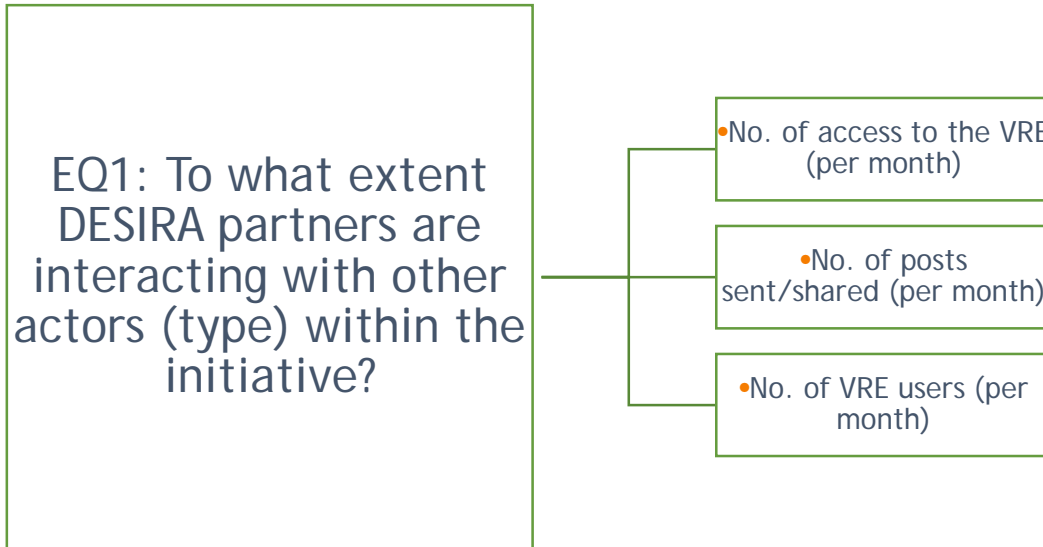
Established quantitative methods / tools

- EU evaluation system: RDP and H2020 indicators
- Composite indices: ASTI, OECD
- Economic: ROI, IRR, SROI, CBA etc.
- Scientometrics: bibliometrics, patents etc.
- Altmetrics: mainly social media indicators



Fit into the
context!

Sample interactivity indicators from the project DESIRA



VRE=Virtual Research Environment

Basic evaluation training for the team

1. Evaluation scope
2. Evaluation objectives
3. Evaluation plan
4. Indicators

Theory of Change???

Great to monitor the project progress but not always helpful to understand interactive innovation

Alternatives to ToC may help (e.g. PIPA, SNA, Outcome Mapping)

MEL: key take aways

- MEL is needed at all project stages
- Most classical methods / indices are too complex for self-evaluation
- Classical methods more useful to evaluate programmes / portfolios rather than individual projects
- Let people design their own indicators / dashboards
- Some indicators inspired by those of the existing tools, other entirely project specific
- Challenge to measure and obtain relevant data
- Evaluation at the project level is more oriented on learning and utility

Diverse stakeholders working
together

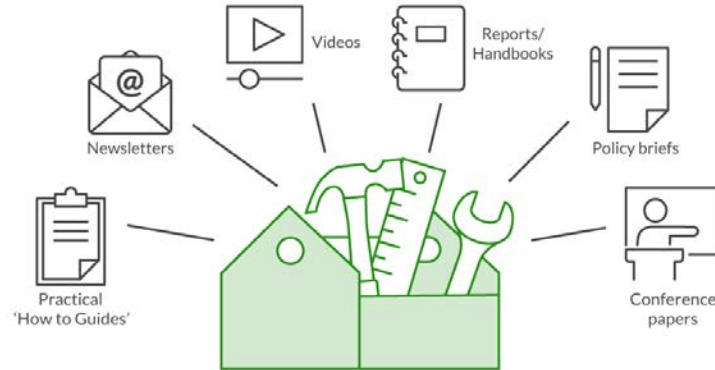
=

Pull in different resources
incl. evaluation capacity

Check on the web

Interactive Innovation Tool Box

www.liaison2020.eu





...thank you!

annamaria.augustyn@yahoo.com



[@liaison2020](https://twitter.com/liaison2020)

www.liaison2020.eu